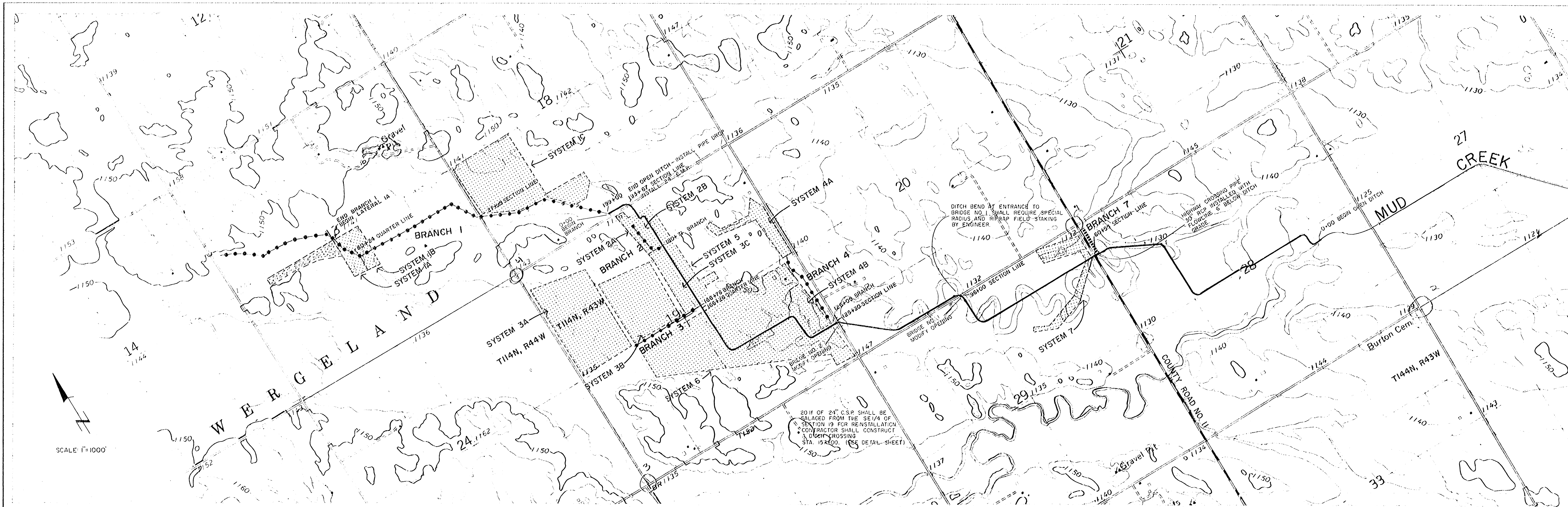
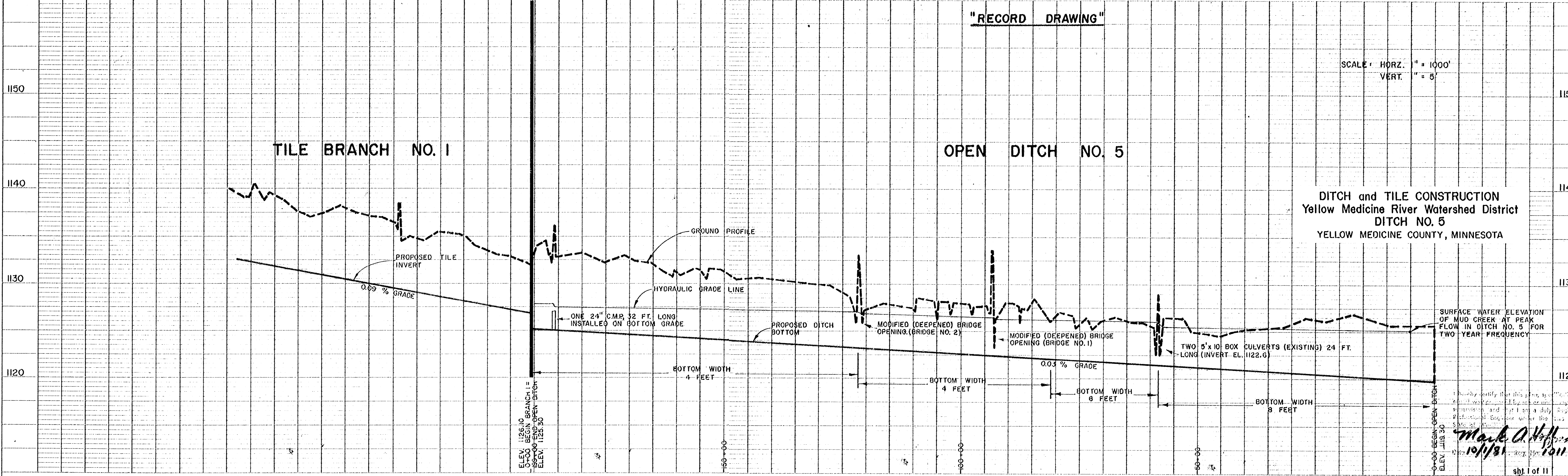


DATE	
BY	
SAVED	
PLANNING	
NOTED	
NOTE BOOK	
NO.	



DATE	
BY	
SAVED	
PROFILE	
NOTED	
NOTE BOOK	
NO.	



"RECORD DRAWING"

SCALE: HORIZ. 1" = 1000'  
VERT. 1" = 5'

DITCH and TILE CONSTRUCTION  
Yellow Medicine River Watershed District  
DITCH NO. 5  
YELLOW MEDICINE COUNTY, MINNESOTA

SURFACE WATER ELEVATION OF MUD CREEK AT PEAK FLOW IN DITCH NO. 5 FOR TWO YEAR FREQUENCY

Mark A. Hillman  
10/1/81